

A Summer Deluge of 'Consultations'

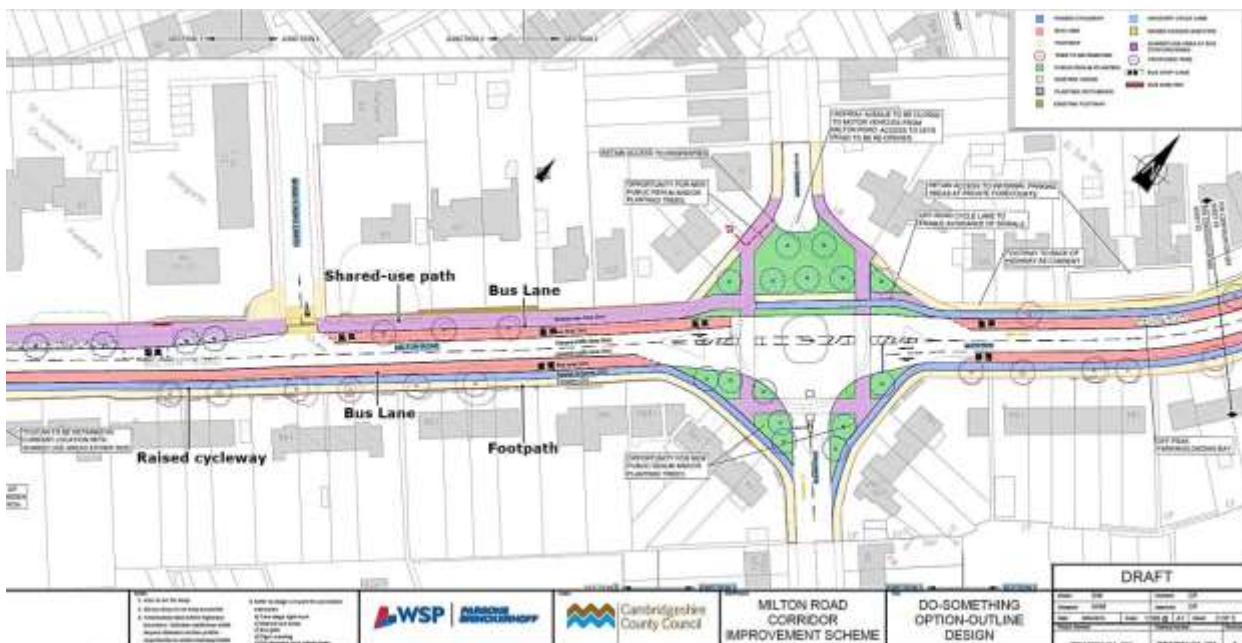
While some of us have been getting away from it all and taking a well-earned break from the EU referendum, our local councils and City Deal authorities have been launching a new series of initiatives and consultations to test the resolve and staying power of Cambridge residents.

Here are some items that will affect all of us – starting with the most urgent (as usual we have been given precious little time to make space in our diaries)

1. Milton Road LLF (Local Liaison Forum)

At their meeting on 9th June at the Meadows Community Centre the City Deal Executive Board voted to accept the recommendations of officers and instructed them to proceed with detailed design work based the 'Do-Something' option that we have been objecting to. As part of their on-going 'community engagement' we have been invited to participate in a Local Liaison Forum to give input to the details of the design in a workshop format.

We will be seeking to get the double bus-lanes from Hurst Park Avenue to Oak Tree Avenue reduced to a single bus lane, as well as getting a re-designed roundabout rather than a traffic-light intersection at Highworth Avenue. *Download the Interim Options Report available at: <http://hpera.co.uk/milton-road> to see the detailed plans on pages 48-53.*



The forum will be open to the public – do come along and support our efforts to get some common-sense changes to the plans.

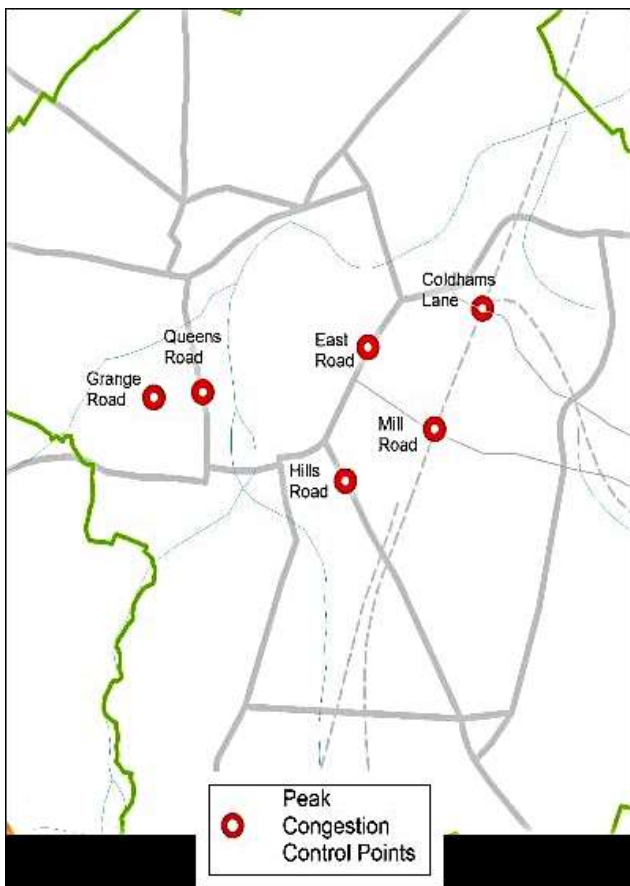
Tuesday 9th August 18.00-21.00 at Rex Freeman Hall, Chesterton Community College. The agenda, terms of reference, and other LLF documents will shortly become available at: http://www.cambridgeshire.gov.uk/citydeal/info/2/transport/10/local_liaison_forum

2. Cambridgeshire and Peterborough Devolution

Following the collapse of the government's original proposals for a devolved assembly covering Norfolk, Suffolk and Cambridgeshire, new proposals for a combined authority covering Cambridgeshire and Peterborough have been put forward by local councils. In order to qualify for devolved powers to administer an additional budget of £20 million per annum for transport infrastructure and £170 million for housing the government requires that a directly-elected mayor should chair the new authority.

The local councils have launched an online consultation and details of the proposals can be found here: <http://www.cambridgeshire.gov.uk/devolution> You can respond to the questionnaire here: <https://www.smartsurvey.co.uk/s/devosurvey/>

3. Plans for Tackling City Centre Congestion



City Deal have launched a consultation on a package of measures including Peak-time Control Points (with ANPR cameras), Workplace Parking Levy (WPL) and On-Street Parking Controls. Leaflets and questionnaires are available at 'community hubs' such as libraries and also online at: www.gccitydeal.co.uk/congestion

Nowhere in these documents is any mention made of how Milton Road bus lanes would fit in. We are at a loss to understand why City Deal wish to proceed with plans for bus lanes before assessing the impact of their planned congestion measures for the city centre. Without traffic congestion there would be no need for extra bus lanes and the desecration of trees and verges. 'Cart before the horse' comes to mind.

As so often with these questionnaires there is a built-in bias and we recommend that you make full use of the 'Comments' boxes to explain your views more fully.

*The consultation continues until **Monday 10th October**. Public exhibitions are being held throughout September and the first week of October – local ones will be held on 13th, 15th and 28th September. We will publish a full list in a future Newsletter, on our website and via email.*

Other News

4th July – hundreds of people from all over greater Cambridge came along to the University Church of Great St Mary's to give their views on the 'Supersizing' of Cambridge, its consequences for this beautiful City and its villages, and its impact on those left behind in the rush for growth. They overwhelmingly supported a motion of 'No Confidence' in the City Deal, particularly its proposals for bus lanes, and called upon City Deal to consider instead better, smarter ideas, which have already been suggested by experts and residents.

<https://www.youtube.com/watch?v=TLTgLbKEjEM&feature=share>

FeCRA took this resolution to the recent City Deal Assembly and Board meetings, with the suggestion that these 'other ideas' could include relatively uncontroversial schemes of clear and demonstrable benefit, such as investment in rail, regional travel hubs, smart traffic signals, and greater investment in Smart Cambridge projects to collect high-quality data and provide personalised travel information.

At the Board meeting, there seemed to some observers to be a modest change of approach. South Cambs leader Francis Burkitt put forward suggestions for rural transport hubs, challenged an officer's non-committal reply about delay on the A428 decisions, and asked Cambs County's Director of Transport Graham Hughes to ensure that senior officers and at least one Board member attended LLF meetings. Councillor Ian Bates expressed an interest in meeting with residents to discuss design. Council Leader Lewis Herbert allowed questioners a limited right of reply.

5th July - a meeting of local councillors and a City Deal officer was held at the Shirley School to elect chairpersons for the Histon Road and Milton Road LLFs and to set the terms of reference. John Beasley and Gerry Rose from HPERA went along and observed a rather chaotic meeting. We await the first workshop on 9th Aug with interest.

<https://www.youtube.com/watch?v=3W5PSffvHLQ>

13th July - Michael Page and Gerry Rose from HPERA attended another City Deal Board meeting at Cambourne and used the opportunity to ask questions about the roundabout and the analysis of consultation responses from the public. We elicited rather more engaging responses than have been forthcoming in the past and some hint that the LLFs might be a way for us to get some changes made.

<https://www.youtube.com/watch?v=6qBf74zuewU> 29:50 and 35:00 minutes in

19th July – having exceeded the threshold of 3000 signatures the **Save the Trees and Verges Petition** was presented by Milton Road Residents' Association for debate to the County Council in full session at Shire Hall. It was gratifying to hear councillors from outside the city supporting the campaign but frustrating to learn of their regrets at having devolved their transport powers to City Deal earlier in the year. The motion from Councillor Scutt that was passed overwhelmingly will, unfortunately, have no legal force:

'We want a commitment from the City Deal Assembly and the City Deal Board that if, in the end, construction requires removal of any single one of the trees in Milton Road, then the City Deal monies return to Milton Road mature trees lining its verges making Milton Road the impressive vista it should be, a lead-in to Cambridge of which we – all of us – whether Cambridge City or from the County as a whole - can be proud.'

https://www.youtube.com/watch?v=xp_X-2lrRPs

Forthcoming Meetings

Milton Road [Local Liaison Forum](#)

Tues 9th August, Rex Freeman Hall, Chesterton Community College, 6.00pm

City Deal [Joint Assembly meeting](#)

Thurs 25th August, South Cambridgeshire Hall, Cambourne, 2.00pm

City Deal [Executive Board meeting](#)

Thurs 1st September, The Guildhall, Cambridge, 2.00pm

The protocol for public speaking at Assembly and Board meetings is here:

<http://scambs.moderngov.co.uk/documents/s94641/PublicSpeaking.pdf>

[Keeping Cambridge Special](#)

Sat 1st October, Centre for Mathematical Sciences, Wilberforce Rd, CB3 0WA

Cambridge is changing fast.

Come and tell us what you think makes it special and how should we look after it.

09.00 Registration and coffee

09.30 Welcome by meeting chair – Ros Aveling (chair of CambridgePPF)

09.40 Introductory talks

Community concerns – Wendy Blythe (Federation of Cambridge Residents Associations)

A college view – Nicky Padfield (Master of Fitzwilliam College)

The role of the architect – Tom Foggin (Cambridge Association of Architects)

The business view – David Cleevely (Cambridge Ahead)

10.50 Coffee

11.10 Breakout groups - your views on what you have heard

What did you like? What didn't you like? What actions need taking?

12.20 Report back and discussion – Lewis Herbert (Leader of Cambridge City Council)

13.00 End

Admission by ticket only – please register on <https://www.eventbrite.co.uk/e/keeping-cambridge-special-tickets-26681582331>

Participants will be asked to donate a minimum of £5 to help cover expenses

Other Useful Links

For an architect's view on Milton Road:

<http://www.miltonroadra.org/static/files/kieran-perkins.pdf>

For an update from Smarter Cambridge Transport on Histon and Milton Roads and suggestions for what to do next:

<http://us11.campaign-archive2.com/?u=9c353baead8e1c20519bc1ce3&id=9641084702>

With thanks to Cambridge Copy Studio for printing this Newsletter at short notice

<http://www.copystudio.biz>